

Continuing Medical Education  
**The Cooper Health System**  
One Cooper Plaza  
Camden, New Jersey 08103-1489

World Class Care. Right Here. Right Now.

**George E. Norcross, III**  
Chairman, Board of Trustees

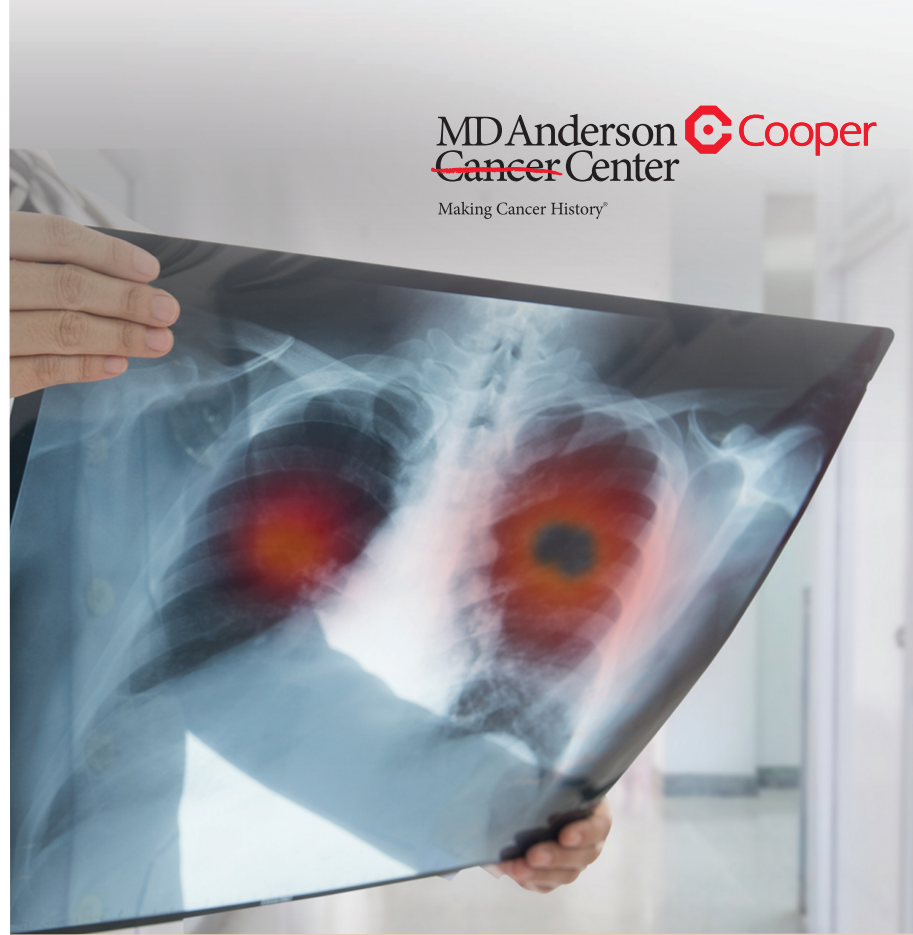
**Anthony Mazzairelli, MD, JD, MBE**  
Co-President and Co-CEO  
The Cooper Health System

**Kevin M. O'Dowd, JD**  
Co-President and Co-CEO  
The Cooper Health System

Non-Profit  
Organization  
US Postage  
**PAID**  
Permit No. 1565  
Bellmawr, NJ

## Innovations in the Field of Lung Cancer

**Tuesday, November 19, 2019**  
**5:45 PM - 8:15 PM**  
The Marian House  
Cherry Hill, NJ



**MD Anderson**  
**Cancer Center**  **Cooper**  
Making Cancer History®

# Innovations in the Field of Lung Cancer

**Tuesday, November 19, 2019**

**5:45 PM - 8:15 PM**

**The Marian House  
Cherry Hill, NJ**

 **Cooper**  
University Health Care



**Cooper Medical School  
of Rowan University**

**CONTINUING MEDICAL EDUCATION**



### Activity Director:

#### Polina Khrizman, MD

Thoracic Lead, Division of Hematology and Medical Oncology  
Department of Medicine  
MD Anderson Cancer Center at Cooper  
Cooper University Health Care  
Assistant Professor of Medicine  
Cooper Medical School of Rowan University  
Camden, NJ  
Adjunct Assistant Professor of Medicine  
University of Texas MD Anderson Cancer Center  
Houston, TX

### Additional Faculty:

#### Wissam Abouzgheib, MD

Head, Interventional Pulmonary  
Division of Pulmonary Medicine and Critical Care  
Department of Medicine  
MD Anderson Cancer Center at Cooper  
Cooper University Health Care  
Associate Professor of Medicine  
Cooper Medical School of Rowan University  
Camden, NJ  
Adjunct Associate Professor of Medicine  
University of Texas MD Anderson Cancer Center  
Houston, TX

#### Frank W. Bowen III, MD

Head, Division of Thoracic Surgery  
Associate Director, Cooper Aortic Center  
Department of Surgery  
MD Anderson Cancer Center at Cooper  
Cooper University Health Care  
Associate Professor of Surgery  
Cooper Medical School of Rowan University  
Camden, NJ  
Adjunct Associate Professor of Surgery  
University of Texas MD Anderson Cancer Center  
Houston, TX

#### Pauline Germaine, DO

Vice Chair, Research and Education  
Department of Diagnostic Radiology  
MD Anderson Cancer Center at Cooper  
Cooper University Health Care  
Associate Professor of Radiology  
Cooper Medical School of Rowan University  
Camden, NJ  
Adjunct Associate Professor of Radiology  
University of Texas MD Anderson Cancer Center  
Houston, TX

#### Gregory J. Kubicek, MD

Head, Division of Radiation Research  
Department of Radiation Oncology  
MD Anderson Cancer Center at Cooper  
Cooper University Health Care  
Associate Professor of Radiation Oncology  
Cooper Medical School of Rowan University  
Camden, NJ  
Adjunct Associate Professor of Radiation  
Oncology  
University of Texas MD Anderson Cancer Center  
Houston, TX

#### David D. Shersher, MD

Co-Director, Aerodigestive Program  
Division of Thoracic Surgery  
Department of Surgery  
MD Anderson Cancer Center at Cooper  
Cooper University Health Care  
Assistant Professor of Surgery  
Cooper Medical School of Rowan University  
Camden, NJ

# Innovations in the Field of Lung Cancer

Tuesday, November 19, 2019

- 5:45 PM – 6:00 PM **Registration/Buffer Dinner**
- 6:00 PM – 6:05 PM **Welcome/Pre-evaluation**
- 6:05 PM – 6:20 PM **Lung Cancer Screening Update**  
*Pauline Germaine, DO*
- 6:20 PM – 6:35 PM **Interventional Pulmonary: Overview and New Diagnostic/Therapeutic Techniques**  
*Wissam Abouzgheib, MD*
- 6:35 PM – 6:50 PM **Innovative Applications of Robotic Surgery for Thoracic Oncology**  
*Frank W. Bowen III, MD*
- 6:50 PM – 7:05 PM **Modern Day Management of Advanced Intrathoracic Malignancies**  
*David D. Shersher, MD*
- 7:05 PM – 7:20 PM **Break**
- 7:20 PM – 7:35 PM **The New World of Immunotherapy: Where Do We Stand?**  
*Polina Khrizman, MD*
- 7:35 PM – 7:50 PM **Radical Surgery for Lung Cancer**  
*Gregory J. Kubicek, MD*
- 7:50 PM – 8:15 PM **Question and Answer Period/Post-evaluation**

### Intended Audience:

The intended audience for this conference includes primary care physicians, pulmonologists, thoracic surgeons, medical oncologists, surgical oncologists, and radiation oncologists. Fellows, residents, physician assistants, advanced practice nurses, genetics professionals, tumor registrars, and other allied health professionals with an educational need or interest in this topic may also attend.

### Overall Learner Objectives:

- Describe current approaches to lung cancer care
- Identify potential benefits and limitations of the screening and diagnostic tests and guidelines
- Understand the role of multidisciplinary team in the care of the lung cancer patient
- Discuss the role of immunotherapy and other targeted therapies in cancer care

### Need More Information?

Please contact:  
Continuing Medical Education  
The Cooper Health System  
2nd Floor, Suite N-300  
1 Federal Street  
Camden, NJ 08103  
Tel: (856) 382-6480  
Fax: (856) 382-6495  
E-mail: CME@cooperhealth.edu

### Innovations in the Field of Lung Cancer

Tuesday, November 19, 2019

5:45 PM - 8:15 PM

The Marian House  
507 Kings Hwy S, Cherry Hill, NJ 08034  
(856) 428-3784

Dept. of CME phone: (856) 382-6480

**Mail registration and payment to:** Continuing Medical Education  
The Cooper Health System  
2nd Floor, Suite N-300  
1 Federal Street  
Camden, NJ 08103

**Or e-mail ALL of the registration information requested below to:** CME@cooperhealth.edu

**Or fax to:** (856) 382-6495

**Or register on-line:** [events.cooperhealth.org](http://events.cooperhealth.org)

*Faxed, e-mailed, and on-line registrations accepted for credit card payments only.*

**Conference Fee: \$20.00** (Includes course syllabus and dinner)

**A notice will be sent to you to confirm your registration.**

Pursuant to the Physician Self-Referral Law (Stark Law), Cooper is limited in the amount of nonmonetary compensation that it may provide to physicians. To ensure that it meets these regulatory limitations, Cooper documents the monetary value of your participation in each Cooper CME activity. If the monetary value provided to you would exceed these regulatory limits, you must pay to participate in the additional CME. Should you have any questions or wish to discuss this further, please contact Cooper's Compliance Department at (856) 536-1309. Thank you for your interest in the CME opportunities.

### Method of Payment:

- ☐ My check for \$\_\_\_\_\_ payable to The Cooper Health System is enclosed.  
☐ Please charge my: ☐ Am. Express ☐ MasterCard ☐ Visa in the amount of \$\_\_\_\_\_.

Card Number	Expiration Date
Name as it appears on the credit card	
Authorized Signature	

Please print

Name & Degree: \_\_\_\_\_ First \_\_\_\_\_ M.I. \_\_\_\_\_ Last \_\_\_\_\_ Degree \_\_\_\_\_

Please check the status of your medical license: ☐ MD/DO - Active ☐ MD/DO - Retired

Please check if you are a ☐ resident or ☐ fellow.

Address (required): \_\_\_\_\_

City/State/Zip: \_\_\_\_\_

Telephone: ☐ Home \_\_\_\_\_ ☐ Work \_\_\_\_\_ ☐ Mobile \_\_\_\_\_ Fax: \_\_\_\_\_

E-mail (required): \_\_\_\_\_

Company Name: \_\_\_\_\_

City/State: \_\_\_\_\_

Specialty/Occupation: \_\_\_\_\_

☐ If you require assistance with hearing, vision, or mobility to make this activity accessible to you, please check here and return by November 5, 2019. You may also contact us if you have special meal requirements. We will contact you at the phone number you provide above.

### Accreditation/Designation/Disclosure:



The Cooper Health System is accredited by the Accreditation Council for Continuing Medical Education to provide continuing medical education for physicians. The Cooper Health System takes responsibility for the content, quality, and scientific integrity of this CME activity.

The Cooper Health System designates this live activity for a maximum of **2 AMA PRA Category 1 Credits™**. Physicians should claim only the credit commensurate with the extent of their participation in the activity.



Successful completion of this CME activity, which includes participation in the evaluation component, enables the participant to earn up to **2 MOC points** in the American Board of Internal Medicine's (ABIM) Maintenance of Certification (MOC) program. Participants will earn MOC points equivalent to the amount of CME credits claimed for the activity. It is the CME activity provider's responsibility to submit participant completion information to ACCME for the purpose of granting ABIM MOC credit.

Successful completion of one hour of a continuing medical education (CME) course recognized by the American Medical Association, the American Osteopathic Association, or the American Podiatric Medical Association is equal to one hour of continuing education for New Jersey nursing license renewal (New Jersey Board of Nursing 13:37-5.3).

All faculty participating in continuing medical education activities sponsored by The Cooper Health System are expected to disclose to the audience any real or apparent conflict of interest related to the content of their presentation.

### Refund Policy:

Your conference registration fee will be refunded (minus a \$10.00 processing charge) if we receive notification of your cancellation no later than November 5, 2019. No exceptions.

### Please Note:

If you are unable to attend after registering, please contact us as soon as possible at (856) 382-6480.

### Cancellation Policy:

The Cooper Health System reserves the right to cancel this conference due to insufficient enrollment or other unforeseen circumstances.



*Registration is required.*

*Space is limited, so registrations will be accepted on a first-come, first-served basis.*

*No registrations by telephone will be accepted.*